

Customer's Voice.

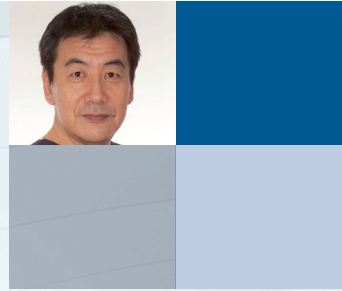
Customer Information:



Tonotsuka Dental Clinic Perio-Implant Center
Director, Ryohei Tonotsuka

- Showa University, School of Dentistry
- Joined Endodontics Course
- 1998 - Opened a practice in Ota-ku
- 2009 - Moved and opened at current location
- Former lecturer for JIADS and 5D-Japan
- AAP member, AO member, OJ full member Study Club TRUST Chairman

Higashi-Yukigaya 1-29-3, Ota-ku, Tokyo
Tel.: 03-3748-6231 · <http://tono-dc.com/>



Customer's Voice.

In surgical procedures, including implant treatment, a sense of safety regarding the surgical device carries a great deal of weight in terms of being able to concentrate on the surgical procedure. In the past, I used the KaVo INTRASurg for a time, but in the last five years, I was using a surgical device from another manufacturer. During those five years, there were a couple of times when I ran into big trouble, when the surgical device stopped running during a procedure. Although I was fortunate enough to get through all procedures, it was very stressful to me and if the procedures would have been more complicated, I would have had to stop the procedures.

While working with the KaVo EXPERTsurg LUX, I appreciate the compact design of this device and the foot control, which is also very compact. When performing an implant treatment, the dentist has to check the insertion direction from various positions and this means the position of the foot control has to be changed often. A very helpful feature is that you can move the foot control by hooking it over the top of your foot. This comfort accelerates the procedure and I work with a better quality, because I can perform the procedure without distractions. Therefore I can work in a very concentrated manner.

Moreover, the surgery device of KaVo has an engine with excellent sense of torque and constant r.p.m.. These two features are very important for achieving high quality in dental surgery and implantology. In implant surgery, the usability of the straight handpiece is good. When forming the lateral window in a sinus lift, I prefer to use the straight handpiece instead of the contra-angle handpiece. The straight handpiece ensures better visibility and provides very easy access, if I open the gingival flap.



Forming drill mounted on a KaVo SURGmatic S201XL



Formation of tooth implant bed



Using a KaVo SURGmatic S11L straight handpiece to form the lateral window during a sinus lift.



Customer's Voice.

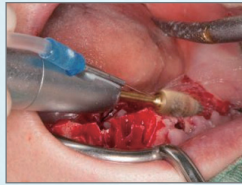
For adjustment of the alveolar crest, the KaVo SURGmatic S11 L straight handpiece is again more efficient than the KaVo contra-angle handpiece. This step is performed after forming an implant hole. Through this, an optimal distance of the bone is possible (see pictures).

When I'm forming an implant hole, I often form it without irrigation, as I collect autologous bone at low rotation and high torque (around 50 rotations).

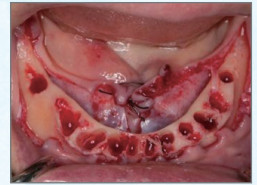
Stable rotation speed and torque are very important and this is considered the most important factor in the performance of a surgical device.

During the last step of implant insertion, I do not often use a constant r.p.m. and torque. I carry out the insertion with low r.p.m, stopping and starting again and again, while making sure the direction is as planned. The feel of the foot control and the increase of the r.p.m. and torque make it really comfortable to use.

The price of the surgical device means that having a second device as a backup is not very realistic; moreover this would also cause problems with regard to the available clinic space. It is very important to choose a product that is highly reliable and that also has good usability, such as the KaVo EXPERTsurg LUX. It allows you to concentrate more on the procedure and it helps you to easily achieve good results.



Preparation of the alveolar crest after the tooth extraction, to continue with the filling



The drilling occurs after the preparation. This is without irrigation and with low rotation. Autologous bones are collected.



The implantation is done carefully, paying attention to the implant depth and direction and considering additional information such as bone hardness.



KaVo. Dental Excellence.

KaVo Dental Systems Japan Co., Ltd.

Tokyo Headquarters - Kita-Shinagawa 4-7-35, Shinagawa-ku, • Tokyo-to 140-0001, Phone 03-6866-7480 Fax 03-6866-7481

Osaka Headquarters - Koraihashi 4-5-2, Chuo-ku, • Osaka-shi 541-0043, Phone 06-7711-0450 Fax 06-7711-0451

Sapporo Branch • Phone 011-716-4694 Fax 011-716-4692 • Sendai Branch • Phone 022-772-7375 Fax 022-772-7376

Nagoya Branch • Phone 052-238-1146 Fax 052-238-1567 • Fukuoka Branch • Phone 092-441-4516 Fax 092-472-1844

<http://www.kavo.jp>

